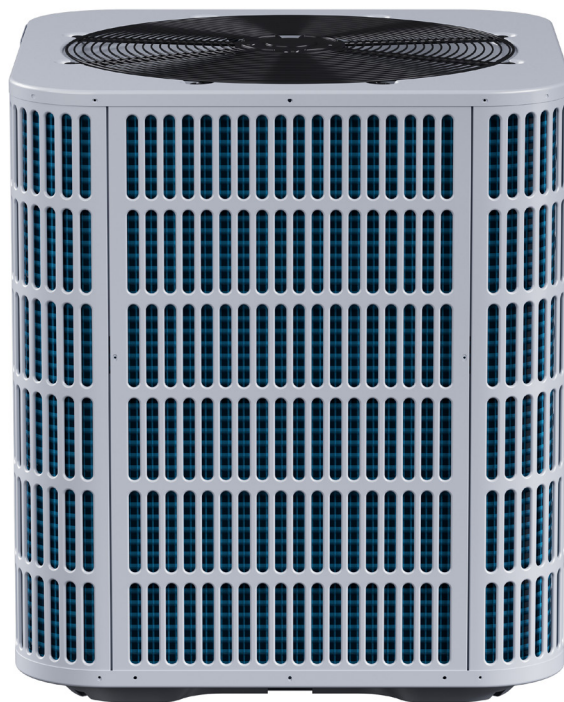

Comfort-Care® **Century**®

SE Series

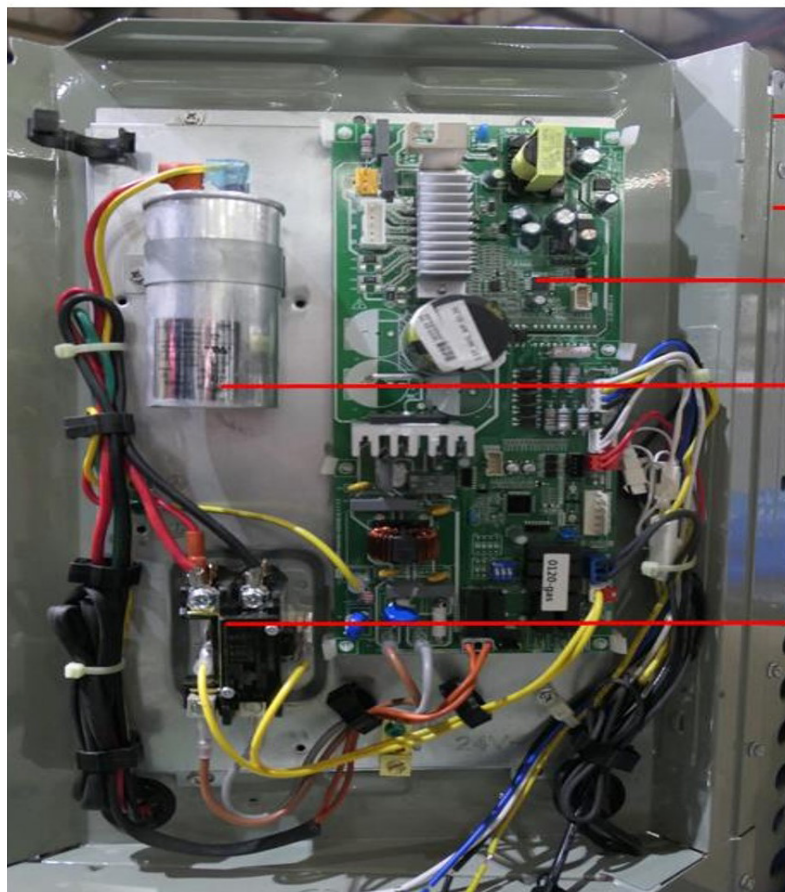
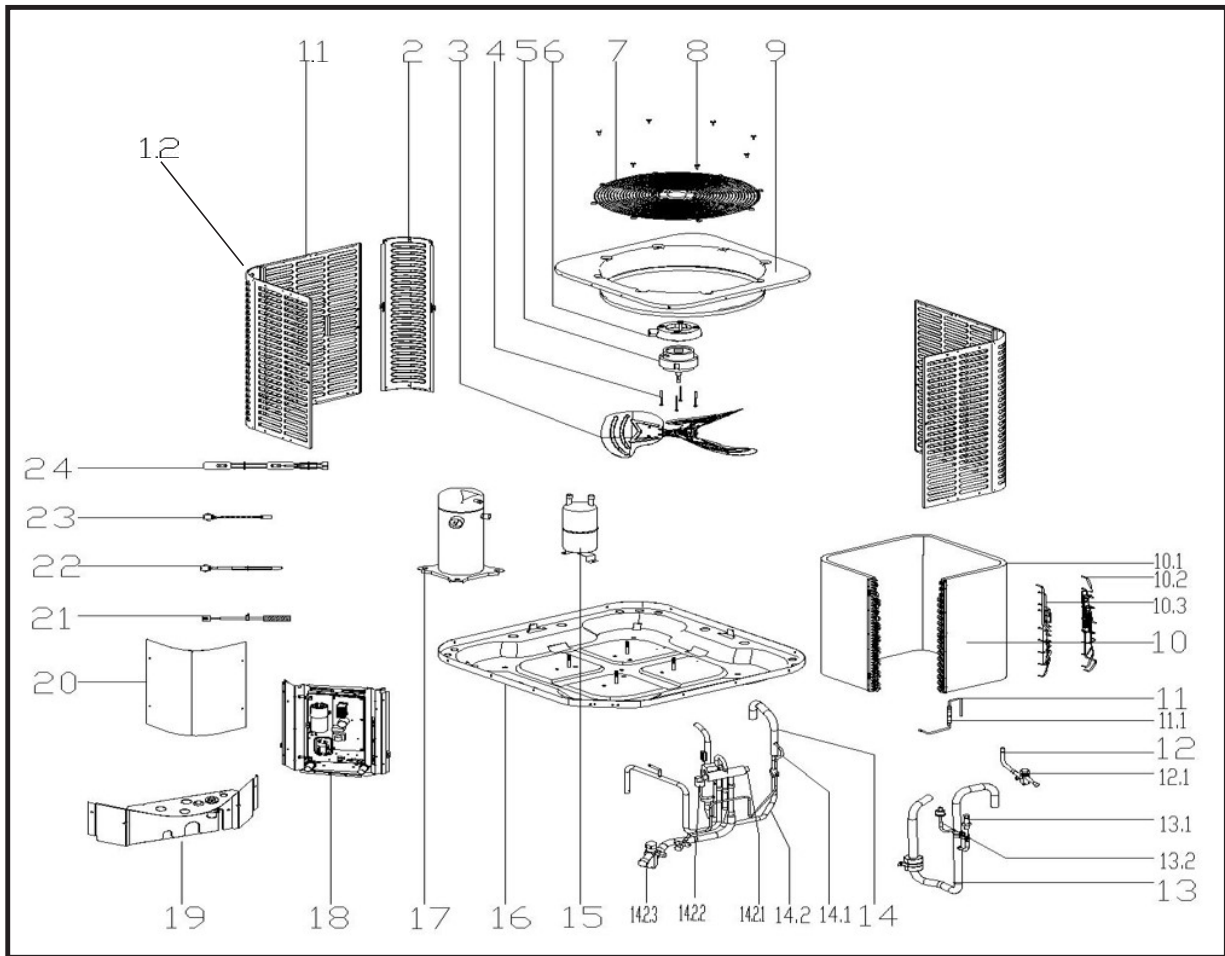
Split System Heat Pump

RSH1530S1A

Parts List



MARS®



EX_ID	Spare Parts Code	Part Name(EN)	Qty.	Recommend store spare parts
1.1	12223000A02330	Side panel assembly	2	
1.2	12223000A02331	Side panel assembly	2	
2	12223000A02329	Support Plate	3	
3	12200104000032	Axial Flow Fan	1	YES
4	11301805000012	Motor Mounting bolt	4	
5	11002015016400	Brushless DC Motor	1	YES
6	12123000000464	Motor installation board ass'y	1	
7	12923000000028	Grille, top cover	1	
8	11301002000001	Stainless steel bolts	8	
9	12223000001097	Top cover assembly	1	
10	15823000004426	B unit condenser assembly	1	YES
10.1	15823000004425	Condenser A	1	
10.2	15123000010913	Condenser inlet pipe ass'y	1	
10.3	15423000004591	Condenser outlet pipe ass'y	1	
11	15423000004590	Throttle assembly	1	YES
11.1	15500210000355	One way valve	1	YES
12	15423000003178	Stop valve ass'y	1	
12.1	15500206000018	Block valve	1	YES
13	15423000005734	Suction pipe ass'y	1	
13.1	15427000001439	Fusible plug assembly	1	
13.2	17400516000149	Pressure switch	1	YES
14	15423000005721	4-way valve ass'y	1	YES
14.1	15123000013411	Pipe joint ass'y	1	YES
14.2	15423000005727	4-way valve assembly	1	YES
14.2.1	15500216000091	4-way valve ass'y	1	YES
14.2.2	17400516000032	Pressure switch	1	YES
14.2.3	15500206000026	Block valve	1	YES
15	15500508000067	Accumulator cylinder	1	
16	12223000005895	Base assembly	1	
17	11102010000409	Fixed Speed Scroll compressor	1	YES
18	17223000008832	E-part box assembly	1	
18.1	12223000015849	Installation plate of electric parts subassembly	1	
18.2	17123000A03565	Outdoor main control board assembly	1	YES
18.3	17400103000147	Capacitor	1	
18.4	11203502000032	AC contactor	1	YES
19	12223000016089	Side panel assembly	1	
20	12223000A05994	Side panel assembly	1	
21	17400513003814	Discharge Temperature switch	1	YES
22	11201007000073	Room Temperature Sensor	1	YES
23	11201007000136	Pipe Temperature Sensor	1	YES
24	17402001000053	Compressor Electric Heater	1	YES

Due to ongoing product improvements, specifications and dimensions are subject to change and correction without notice or incurring obligations. Determining the application and suitability for use of any product is the responsibility of the installer. Additionally, the installer is responsible for verifying dimensional data on the actual product prior to beginning any installation preparations.

Incentive and rebate programs have precise requirements as to product performance and certification. All products meet applicable regulations in effect on date of manufacture; however, certifications are not necessarily granted for the life of a product. Therefore, it is the responsibility of the applicant to determine whether a specific model qualifies for these incentive/rebate programs.

Comfort-Cire®  **Century**®

1900 Wellworth Ave., Jackson, MI 49203 • Ph. 517-787-2100 • www.marsdelivers.com

